

RIDGELINE CONTRACT

INSTALLATION & MAINTENANCE INSTRUCTIONS | LUXURY VINYL

**PLEASE READ ALL INSTRUCTIONS CAREFULLY, BEFORE YOU BEGIN INSTALLATION.
IMPROPER INSTALLATION WILL VOID WARRANTY.**

IMPORTANT NOTICE

Under normal conditions, this product does not require acclimation prior to installation unless it has been exposed to extreme cold or heat (below 20° F or above 120° F) in the 12 hours prior to installation for over 2 hours. Maintain the home environment at no less than 50° F.

For best results, make sure to always work from 2 to 3 cartons at a time, mixing the planks during the installation.

BEFORE YOU START

- Calculate the room surface prior to installation and plan an extra 10% of flooring for cutting waste.
- If the boxes of flooring were exposed for over 2 hours to extreme temperatures (under 20° F or over 120° F) within the 12 hours before the installation, acclimation is required. In this case, keep the boards in room temperature for at least 12 hours in unopened package before you start the installation. The room temperature must be maintained consistent between 60° F to 80° F before and during installation.
- 24 hours after installation, gradually turn heat down. Flooring will perform well after installation in temperatures between 0° F to 140° F.
- Heat can be turned down gradually 24 hours after installation. Room temperatures can be set between 0° F to 140° F.
- **Flooring must be allowed to freely float, with proper expansion space. Do not install cabinets or other heavy objects over flooring.**
- For floor surfaces exceeding 6400 square feet and/or lengths exceeding 80 lineal feet, use expansion moldings.
- Inspect your subfloor before you begin. It must be clean and level to 3/16" within a 10 lineal foot span.
- Although this floor is waterproof, it is not to be used as a moisture barrier. The subfloor must be dry (max 2.5% moisture content - CM method). This product is also not to be installed in areas that have a risk of flooding such as saunas or outdoor areas.
- If this flooring is intended to be installed over an existing wooden floor, it is recommended to repair any loose boards or squeaks before you begin the installation.
- With a floating floor you must always ensure you leave a 1/4" gap between walls and fixtures such as pipes and pillars, stairs, etc. These gaps will be covered with trim moldings after the floor is installed.

Tip: When installing around pipes, drill the holes 3/4" larger than the diameter of the pipes.

- Decide the installation direction. It is recommended to install the length direction of the planks parallel to the main light direction.
- Measure the area to be installed. The board width of the last row shall not be less than 2". If so, adjust the width of the first row to be installed. In narrow hallways, it is recommended to install the floor parallel to the length of the hall.
- Inspect each individual plank one by one before installation. No claims on surface defects will be accepted after installation.
- Due to the speed of sudden temperature changes, which has the potential to negatively affect this flooring, it is not recommended to install over any electrical radiant heating system. Installation over electrical radiant heating systems will not be covered by the manufacturer's warranty. Below instructions are for radiant heating systems using water.
- Ensure the (water based or hydro) radiant heat surface temperature never exceeds 81° F. Before installing over newly constructed radiant heat systems, operate the system at maximum capacity to force any residual moisture from the cementitious topping of the radiant heat system. The maximum moisture content of the screed is 1.5% (CM method). Shut down the floor heating at least 48 hours prior to installation. Make sure that the temperature in the room is at least 60° F during installation. It is recommended that the radiant heat be applied in a gradual manner after installing the floor. Refer to the radiant heat system's manufacturer recommendations for additional guidance.

INSTALLATION TOOLS

1/4" spacers	Pencil	Ruler
Rubber mallet	Tape Measure	Utility knife

****Please note: Ridgeline Luxury Vinyl comes with an attached cushion. No additional foam is required or recommended.****

BASIC INSTALLATION

1. After thoroughly cleaning the subfloor, you should begin laying from left to right. Place the floorboard 1/4" from the left wall. Use spacers between the wall and the floorboard. *Diagram 1.*

2. Second Plank, first row. Drop the plank and gently press down the end with a rubber mallet so it firmly locks into the previous plank until both are at the same height. Make sure both planks are perfectly aligned. *Diagram 2.*

NOTE: If you notice both planks aren't at the same height or are not well locked together, please follow the disassembling instructions at the bottom of the page, disassemble and check if any debris stuck inside the lock is obstructing.

WARNING: FAILURE TO PROPERLY LINE UP THE END JOINT AND ATTEMPTING TO FORCE IT IN WHILE OUT OF ALIGNMENT COULD RESULT IN PERMANENT DAMAGE TO THE END JOINT.

3. At the end of the first row, leave an expansion gap of 1/4" to the wall and measure the length of the last plank to fit. *Diagram 3.*

4. To cut the plank, use a simple utility knife and ruler, and with the top side facing up, cut heavily and several times on the same axis. The knife will not go through the surface but make a deep cut. You can then lift one half of the plank using your other hand to hold down the second placing it very close to the cut. The plank will split naturally. *Diagram 4.*

5. Start the second row with the leftover cut part of the last plank of the previous row. This small plank should measure at least 12". Otherwise, use another plank that should be cut in two. The end joints of each adjoining row should not be closer than 8" to each other. *Diagram 5.*

6. Click the long side of the plank into the previous row and place it tight to the short end of the previous plank with an angle of 30°. Drop the plank and gently press down the end with a rubber mallet so it firmly locks into the previous plank until both are at the same height. Make sure both planks are perfectly aligned. *Diagram 6.*

NOTE: If you notice both planks aren't at the same height or are not well locked together, please follow the disassembling instructions at the bottom of the page, disassemble and check if any debris stuck inside the lock is obstructing.

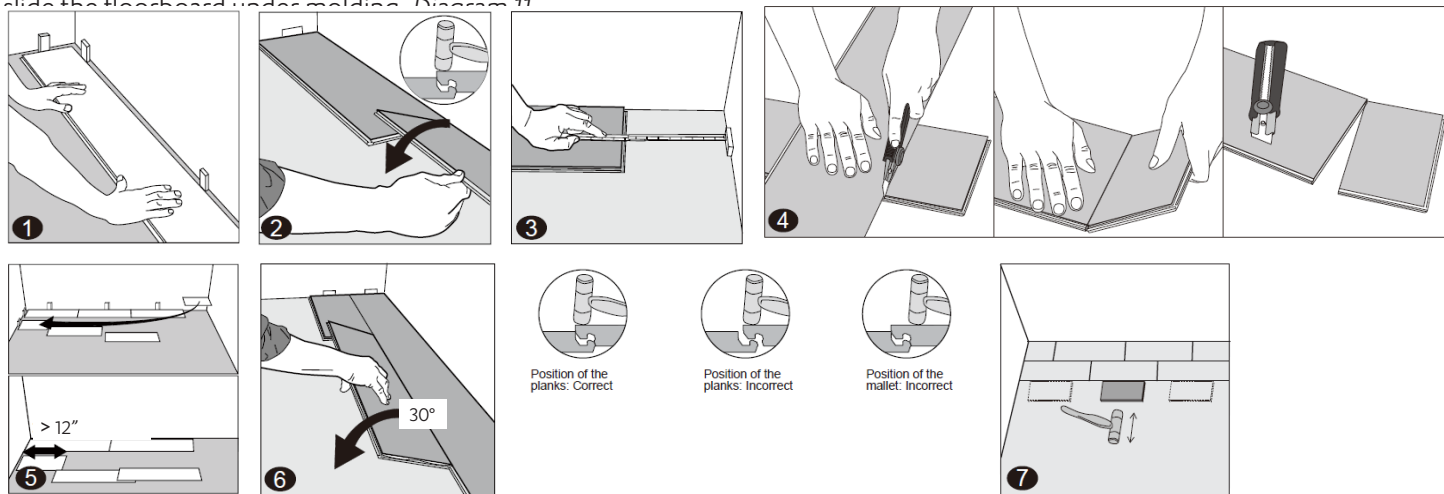
7. HELPFUL HINT: After finishing the installation of every row, use scrap pieces and a small hammer or rubber mallet to gently tap the planks into the click of the previous row to make sure they are tightly clicked together and make sure there is no gap between the long side of the planks installed. ANY GAPPING CAN COMPROMISE THE WHOLE INSTALLATION. *Diagram 7.*

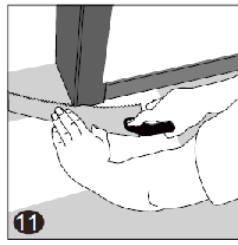
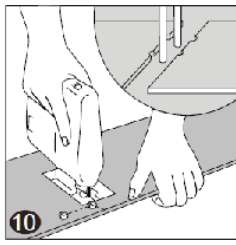
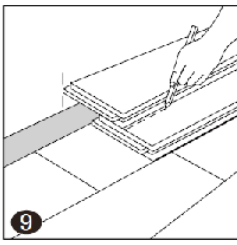
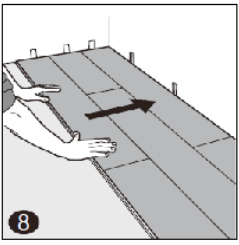
8. After 2-3 rows. Adjust the distance to the front wall by leaving an expansion gap of 1/4". Always ensure that the end joints are staggered at least 8", both when in the same row as when from one row to the next one. *Diagram 8.*

9. To lay the last row: position a loose board exactly on top of the last row laid. Place another board on top, with the tongue side touching the wall. Draw a line along the edge of this boards, to mark the first board. Cut along the edge of this board to mark the first board. Cut along this line to obtain the required width. Insert this cut board against the wall. The last row should be at least 2" wide. The spacers can then be removed. *Diagram 9.*

10. Holes for pipes: measure the diameter of the pipe and drill a hole that is 3/4" larger. Saw off a piece as shown in the figure and lay the board in place on the floor. Then lay the sawed-off piece in place. *Diagram 10.*

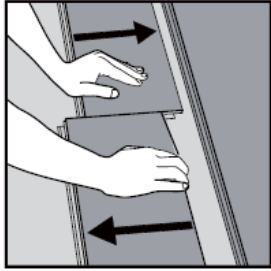
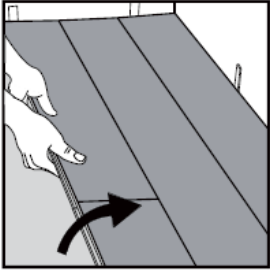
11. Door molding and skirting: lay a board (with the decorative side down) next to the door molding and as shown in the figure. Then slide the floorboard under molding. *Diagram 11.*





DISASSEMBLING

Separate the whole row by lifting it up delicately at an angle. To separate the planks, leave them flat on the ground and slide them apart. If planks do not separate easy, you can slightly lift up the planks (5°) when sliding them apart.



CARE AND MAINTENANCE

- Sweep or vacuum daily using soft bristle attachments
- Clean up spills and excessive liquids immediately
- Damp mop as needed and use cleaners recommended with no-wax or oil
- Use proper floor protection devices such as felt protectors under furniture
- Use a mat at entrance ways (please ensure the mat doesn't have rubber backing)
- Do not use abrasive cleaners, bleach or wax to maintain the floor
- Do not drag or slide heavy objects across the floor

RECOMMENDED SPRAY CLEANER: FreshFloors by WF Taylor

Contact your flooring retailer with questions or concerns regarding your flooring purchase.