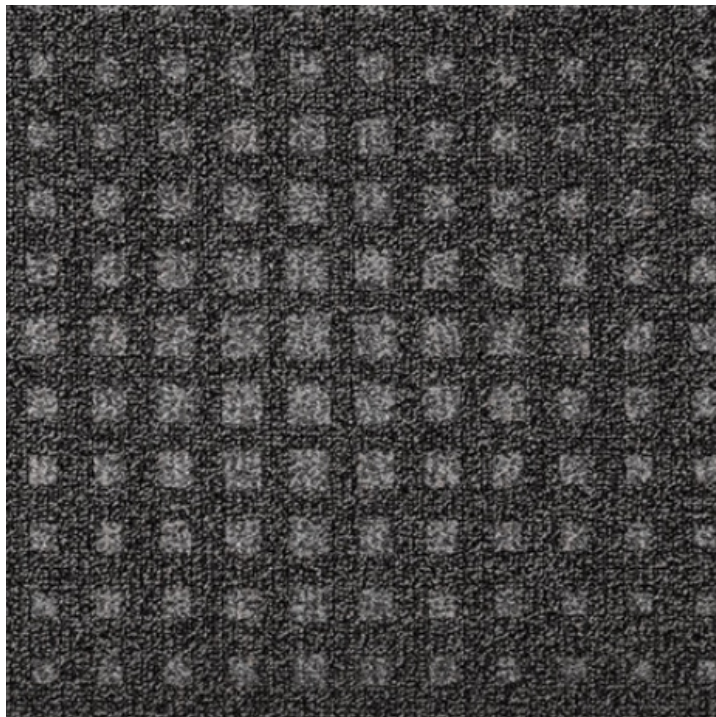


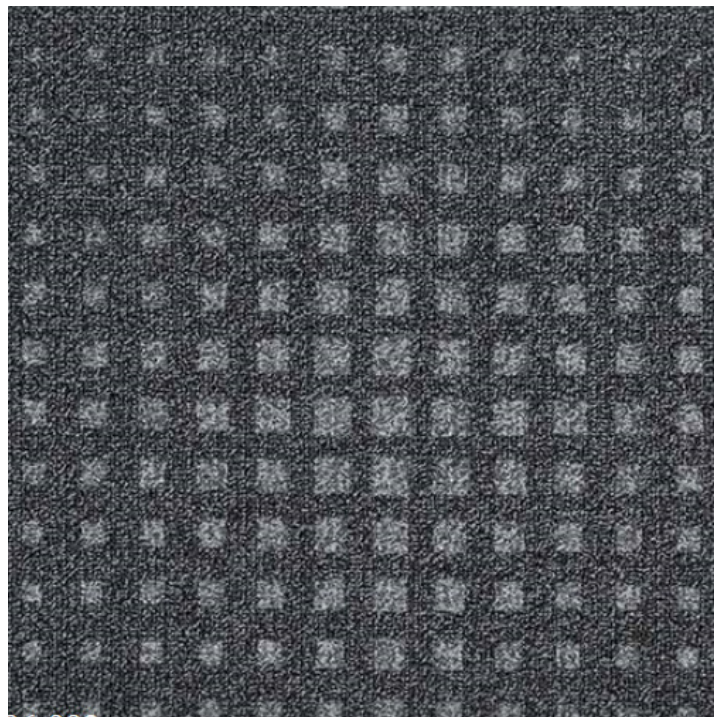
CleanStep Carpet Tile

COMMERCIAL CARPET | HARDWOOD | LAMINATE | LUXURY VINYL

24oz Commercial Grade Entry Carpet Tile



Terra Firma
NE896001



Charcoal
NE896003

Specifications:

Dimensions: 19.7" wide x 19.7" square tile

Packaging: 6 sy/ctn, 20 tiles/ctn, 32 ctn/pal, 192 sy/plt, 51.6 lbs/ctn

Weight: 24oz/per sq yd, 815g/m², dense 1/12 gauge

Fiber System: 100% BVF Solution Dyed Nylon

Recommended Adhesive: NexTabs or WF Taylor Dynamic 2098

Recommended Cleaner: FreshFloors by WF Taylor

Warranty: Lifetime Commercial (see full warranty for details)

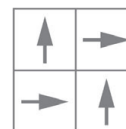
Benefits:

- **Extends Flooring life:** minimizes the volume of dirt and moisture that enters the building, to reduce abrasive wear and extend the life of interior flooring.
- **Improves Appearance (at lower maintenance cost):** installed at entrances reduces soiling in interior spaces, to improve aesthetics and lower periodic cleaning costs.
- **Safer than loose mats:** CleanStep carpet tile can be fully adhered to the floor, to eliminate the trip hazard associated with loose mats.
- **Stylish entrance solution:** CleanStep's contemporary embossed-grid pattern complements upscale lobbies
- **Sustainable:** CRI Green Label Plus, 100% PVC-free & up to 20% pre-consumer recycled content



Installation Methods:

- Follow CRI Carpet Installation Standards Guidelines
- Inspect new flooring prior to installation
- Always work from several boxes
- Use floor protection for furniture
- Vacuum regularly and use walk-off mats at entrances



Quarter-turn

Read Complete Instructions Before Installing