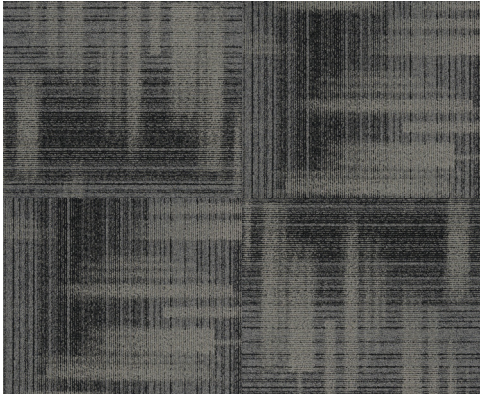
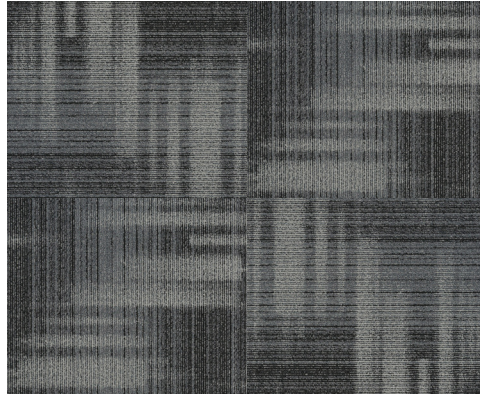


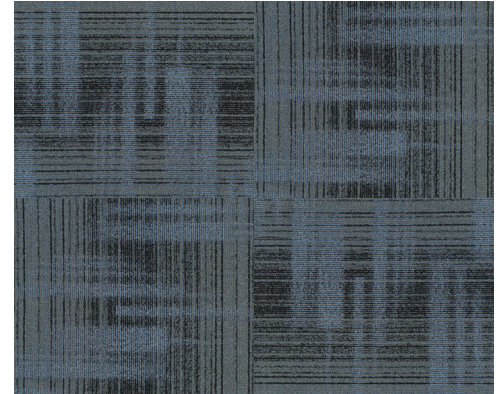
18 OZ COMMERCIAL CARPET TILE



NE883011 | **Ancient Root**



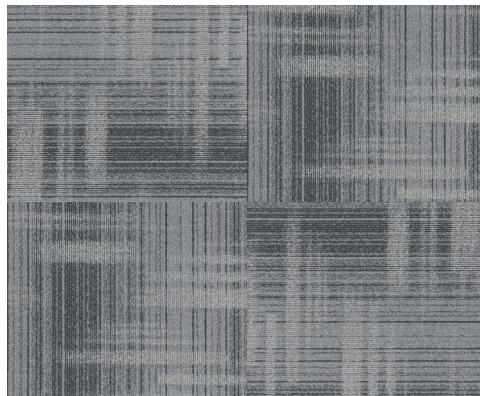
NE883010 | **Eclipse**



NE883014 | **Commodore Blue**



NE883008 | **Meteorite**



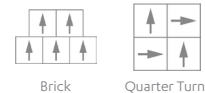
NE883007 | **Silver Lining**

SPECIFICATIONS

Weight	18 oz, Dense 1/12th Gauge
Fiber Content	Twisted, Solution Dyed Nylon Heavy PVC Free Bitumen Backing
Dimensions	19.7" Wide x 19.7" Long Tile
Installation	Follow CRI Carpet Installation Guidelines
Recommended Adhesive	Taylor Versatile or Dynamic, SprayLock 6500
Recommended Cleaner	Taylor Fresh Floors
Warranty	Lifetime Commercial <i>Stain Resistance, Backing Performance, Wear</i>

INSTALLATION FAST FACTS

- Follow CRI Carpet Installation Standards and Guidelines
- Inspect new flooring prior to installation
- Always work from several boxes
- Clean up spills immediately
- Use floor protection for furniture
- Installation Options:



Brick

Quarter Turn

Read Complete Instructions Before Installing



tasflooring.com

ADDITIONAL INFO
WARRANTY
INSTALLATION & MAINTENANCE

