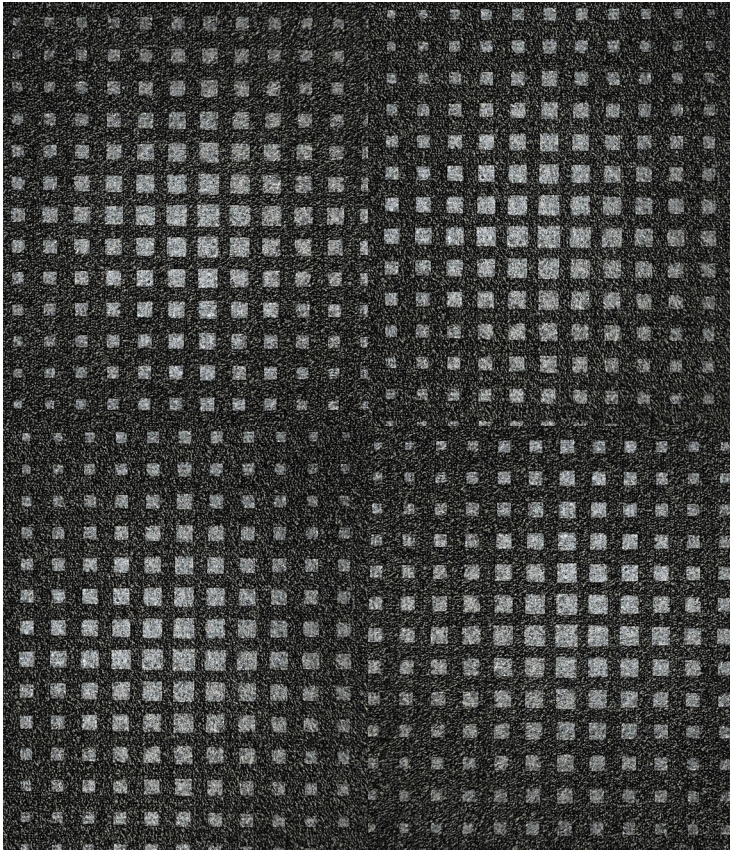
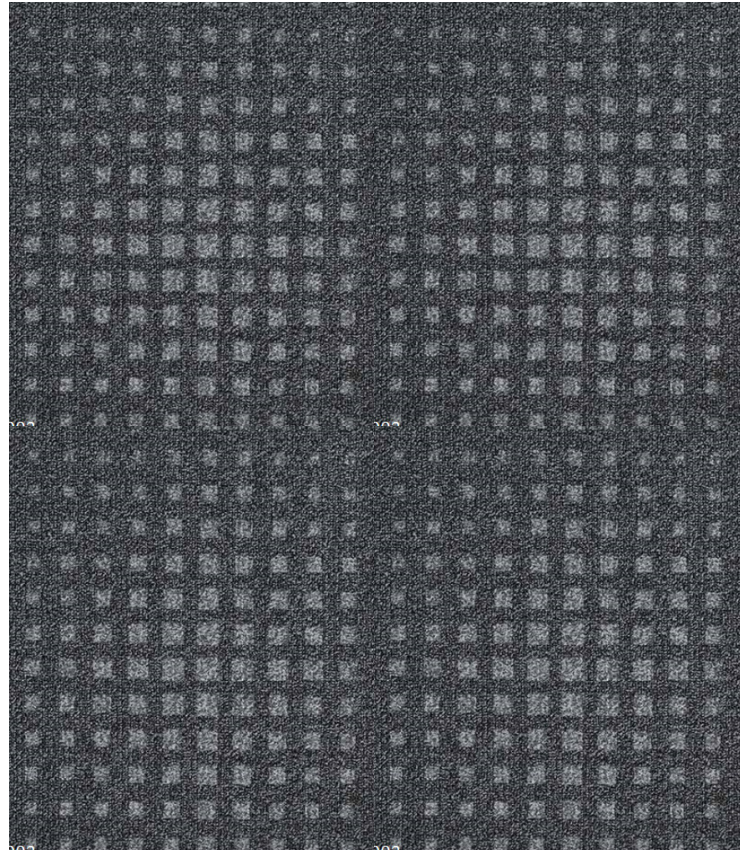


24 OZ COMMERCIAL ENTRY CARPET TILE



NE896001 | **Terra Firma**



NE896003 | **Charcoal**

SPECIFICATIONS

Weight	24 oz, Dense 1/12th Gauge
Fiber Content	Solution Dyed Nylon
Dimensions	19.7" Wide x 19.7" Long Tile
Installation	Follow CRI Carpet Installation Guidelines
Recommended Adhesive	Taylor Dynamic
Recommended Cleaner	Taylor Fresh Floors
Warranty	Lifetime Commercial <i>Stain Resistance, Backing Performance, Wear</i>

INSTALLATION FAST FACTS

- Follow CRI Carpet Installation Standards and Guidelines
- Inspect new flooring prior to installation
- Always work from several boxes
- Clean up spills immediately
- Use floor protection for furniture
- Installation Options:



Quarter Turn

Read Complete Instructions Before Installing



ADDITIONAL INFO
WARRANTY
INSTALLATION & MAINTENANCE

tasflooring.com

