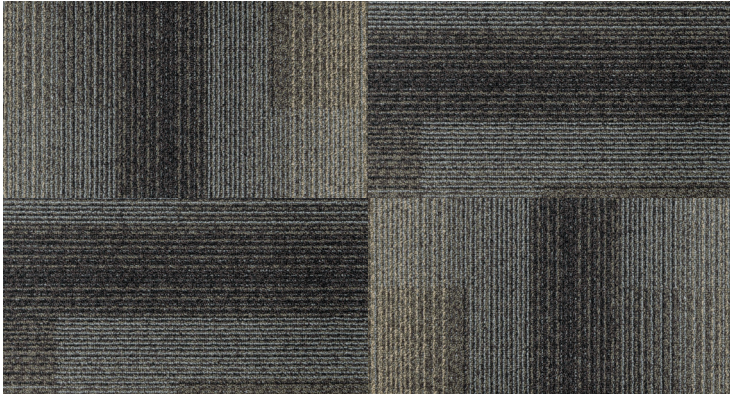


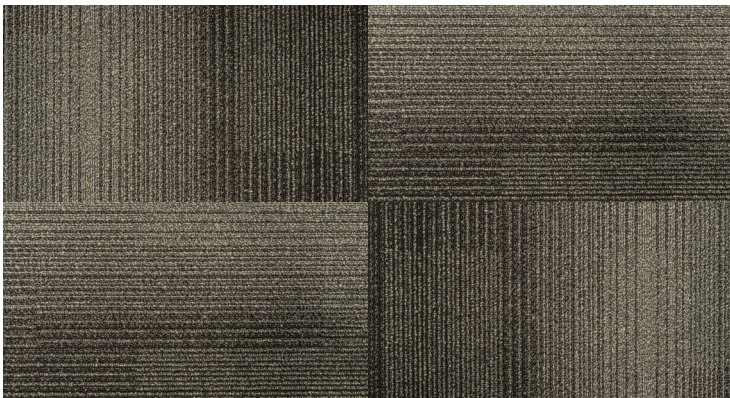
18 OZ COMMERCIAL CARPET TILE



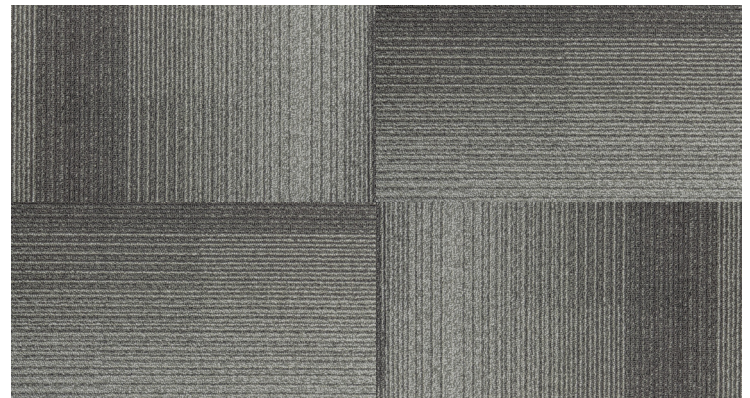
NE811011 | **Iron Ore**



NE811013 | **Camel**



NE811022 | **Carbon**



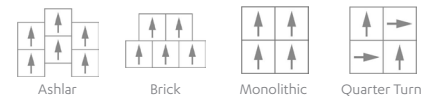
NE811010 | **Gunmetal**

SPECIFICATIONS

Weight	18 oz, Dense 1/12th Gauge
Fiber Content	Twisted, Solution Dyed Polypropylene Heavy PVC Free Bitumen Backing
Dimensions	19.7" Wide x 19.7" Long Tile
Installation	Follow CRI Carpet Installation Guidelines
Recommended Adhesive	Taylor Versatile or Dynamic, SprayLock 6500
Recommended Cleaner	Taylor Fresh Floors
Warranty	Lifetime Commercial <i>Stain Resistance, Backing Performance, Wear</i>

INSTALLATION FAST FACTS

- Follow CRI Carpet Installation Standards and Guidelines
- Inspect new flooring prior to installation
- Always work from several boxes
- Clean up spills immediately
- Use floor protection for furniture
- Installation Options:



Read Complete Instructions Before Installing



ADDITIONAL INFO
WARRANTY
INSTALLATION & MAINTENANCE

tasflooring.com

